



# Radiant Floor Heating

Superior Comfort with Quality Service

**DEVI**<sup>TM</sup>  
Heating Systems



# Experience luxurious warm floors all year round with a floor heating system from DEVI.

DEVI Heating Systems use radiant heat to warm your home from the ground up. Rather than blow dry, dusty air around the house, DEVI floor heating provides a pleasant warmth for your feet and body by warming the floor surface. This is the perfect finishing touch to any room in your home.

Electric floor heating goes particularly well under hard floor surfaces and does not take up valuable floor space. One of the great advantages of floor heating in bathrooms is that heat is not lost in the exhaust air, as seen with convection heating. In addition, floor heating is hidden from view and does not take up valuable space. This form of heating considerably reduces the amount of traveling dust particles which is naturally a great relief to allergy and asthma sufferers.

Our thermostats allow you to heat specific rooms independently and can be programmed to automatically meet your weekday and weekend lifestyle.

Pure comfort is far from the only reason to choose DEVI floor heating. DEVI offers flexibility, durability, minimal energy consumption and comes with a warranty that is second to none.

## Why Choose DEVI Heating Systems?

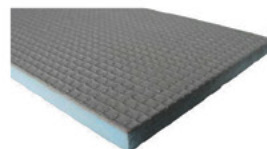
- ✓ 20 year warranty on cables and mats
- ✓ Approved to Australian standards
- ✓ After-sales service and support
- ✓ Maintenance free
- ✓ Total comfort heating
- ✓ No ducts, radiators or vents
- ✓ Hidden from view and does not take up valuable space
- ✓ Can be applied under almost all hard surfaces
- ✓ Minimal energy consumption
- ✓ Reliable service
- ✓ Silent and safe
- ✓ Easy and inexpensive to install

## DEVI - The Leading Brand

DEVI has been involved in the heating industry since 1942 and is the world's largest electric heating cable supplier, offering a complete range of floor heating products worldwide.



*Devimats are self-adhesive, easy to work with and produce superior results.*



*Ask about our F-Board Insulation, recommended for particular systems to reduce downward heat loss and increase efficiency, saving YOU money!*



*Intelligent floor sensing thermostats ensure accurate temperature control using minimal energy.*



## Floor Heating Options

### In Slab

In Slab 'storage' heating is suitable for one room or the whole house, providing economical warmth. It can be installed under just about any floor covering available including carpet, timber, tiles, stone as well as polished and tinted concrete floors.

Recommended product – Deviflex range of cables.

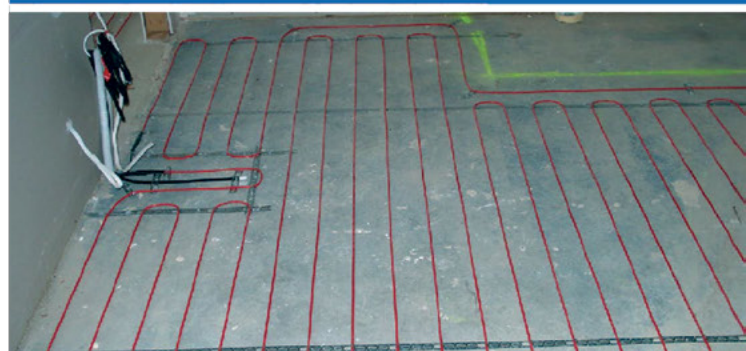


In Slab

### In Screed

In Screed "demand" heating can be installed under most floor coverings including carpet, timber, tiles and stone. Cables are embedded into a 20-25mm thick sand and cement screed bed.

Recommended Product – Deviflex range of cables.

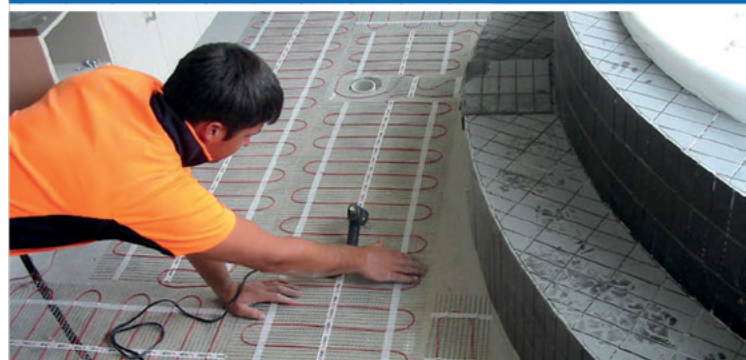


In Screed

### Embedded in Tile Adhesive

These systems deliver warmth on demand. It can be installed almost anywhere, even on top of an existing tiled floor, and is designed to be laid directly under the tiles in an adhesive bed. They add a minimal increase in floor height.

Recommended Product – Devimat.



Embedded in Tile Adhesive

### Insulated Heating Panels for Under Floating Floors

These systems are recommended for use under manufactured floating timber floors. The panel's polystyrene insulation ensures that any heat loss downwards is minimised and its aluminium surface ensures a uniform distribution of heat transfer to the timber floor.

Recommended Product – Devicell.



Insulated Heating Panels for Under Floating Floors



We would be delighted to design a world-class electric floor heating system for your desired application. Please contact us for an obligation-free quote at [info@glowhce.com.au](mailto:info@glowhce.com.au) or [sales@sunraycomfort.com.au](mailto:sales@sunraycomfort.com.au)

## Superior Comfort with Quality Service



Glow and Sunray specialise in heating and cooling solutions for new and existing buildings in residential, commercial and industrial environments.

For more information, please contact us at:

**352 Morphet Road, Warradale**

**T 08 8397 6100 | 08 8396 5617**

**E [info@glowhce.com.au](mailto:info@glowhce.com.au)**

**E [sales@sunraycomfort.com.au](mailto:sales@sunraycomfort.com.au)**



**COMFORTLINE™**



**Glow Heating Cooling Electrical**  
352 Morphet Road, Warradale  
T 08 8397 6100

**Sunray Comfort Heating**  
352 Morphet Road, Warradale  
T 08 8396 5617